

**Programmable  
Marking Catalog  
Dot-Peen, Scribe,  
& Laser**

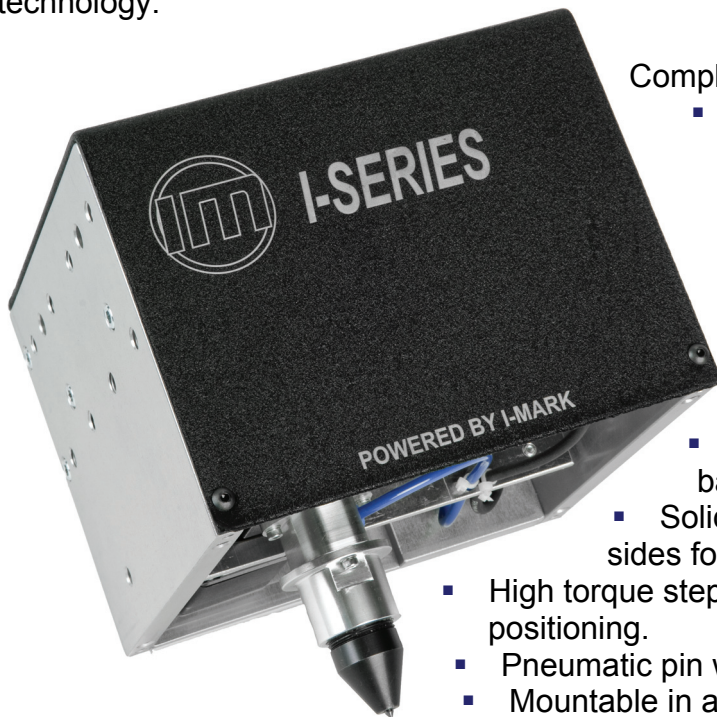




# Tomorrow's marking technology...today!

## I-Series Dot-Peen Unit

**Compact industrial integration dot-peen** marking system with heavy duty frame and linear rail guidance system to ensure precise operation. The marking speed is 3-5 characters per second. It has a very small foot print with 3 sides available for mounting. These systems come with two marking window options: medium and large size. The I-Mark controller uses the latest in drive technology.



Complete marking unit for integration:

- Pneumatic Dot-Peen Marking Head in two window sizes
- Model 200 I-Mark Controller
- I-Mark software for programming (details page 22)
- Power cable, Marking head cable, Cross over cable, and LAN cable

### The I-Mark-ID Marking Head:

- Air and controller connection located on back of marker.
- Solid aluminum frame with ½" plates on three sides for easier mounting, all pre-drilled & tapped.
- High torque stepper motors and linear rails for precise positioning.
- Pneumatic pin with carbide tip to mark materials up to 45 Rc
- Mountable in any orientation

### The I-Mark Model 200 controller:

- Compact design for easy installation into production equipment.
- Communication options including remote programming over LAN, and operational controls via I/O, Modbus, Serial, Ethernet IP ect.
- Monitor upgrade and more details page 18.

### Options:

- Pedestal mount
- Upgrades: database and camera integration





## I-Series Dot-Peen Unit

### I-Series Dot-Peen How to Order

To Order: Select only the symbols that represent the marker feature that is needed. Place that symbol in the sequence as shown.		
Model/Feature	Symbol	Example
I-Mark Integrator Dot-Peen	IM-ID	
Medium Marking Window	60	
Large Marking Window	200	
Without Shield	-	
With Shield	D	
Standard Pin	-	
2" Extended Pin	X	
10 ft (3m) Cable	-	
25 ft (7.5m) Cable	25	

### Utilities:

- Controller requires 110 VAC power, 6 ft (1.8m) electrical cord supplied
- Air power required, 8mm push-in tube fitting requires connection to air supply (30-75 PSI operating range)

### Features:

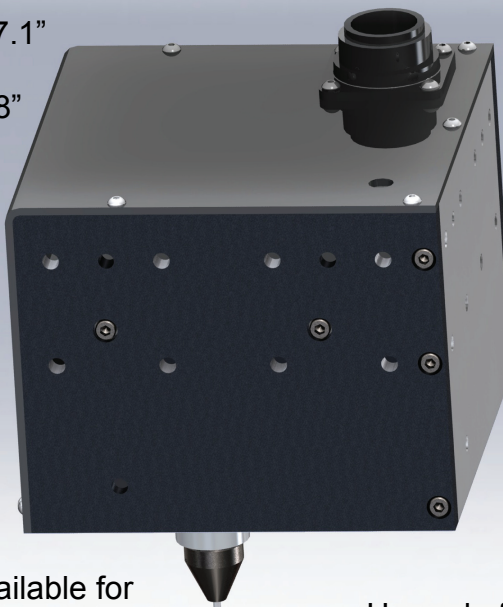
- High torque stepper motors with cog tooth drive belts allow mounting of unit in any orientation
- 2 marking windows;
  - Medium = 1.59" x 2.35" (40 x 60mm)
  - Large = 3.18" x 7.87" (80mm x 200 mm)
- Marking speed of 5 (1/8", 3mm) cps
- 10 ft (3m) or 25 ft (7.5m) cable from head to controller
- Carbide pin included – Marks plastic, wood and metals (up to 45 RC)
- Weight of marking head only: 12.42 lbs (5.6 kg)



### Illustration of IM-ID series

Envelope dimensions:  
 Medium - 8.44" high x 7.1" x 7.1"  
 (214 x 180 x 180mm)  
 Large: 8.44" high x 8.7" x 12.8"  
 (214 x 220 x 325mm)

Marking windows:  
 Medium - 1.59" x 2.35"  
 (40 x 60mm)  
 Large - 3.18" x 7.87"  
 (80mm x 200mm)



Mounting  
available on  
three sides

Standard pin or 1"  
pin extension for  
marking in  
recesses

Complete detailed drawings available for  
download at [www.marking-machines.net](http://www.marking-machines.net)

Upgrade for industrial debris shield





## Options

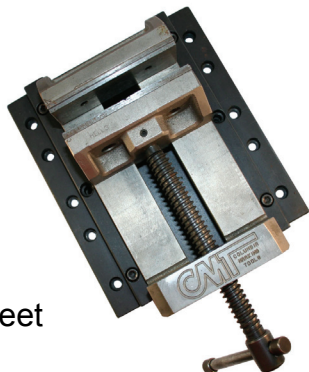
Part locating fixtures provide exact positioning to assure mark is placed on the proper place on the work piece. CMT provides standard and custom fixturing.

### Adjustable Vise with Master Fixture Plate

To easily position parts on standard CMT benchtop frames.

Dimensions:  
4" (100mm) wide  
opening  
4" (100mm) across  
jaws  
1 9/16" (40mm) depth

Also included (4) t-slot feet  
and mounting bolts  
*Part Number: PRGVISE*

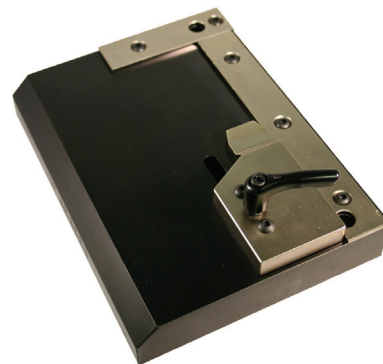


### Adjustable Tag Fixture Plate

To provide adjustable fixture for a wide range of tags on standard CMT benchtop frames.

Tag  
Dimensions:  
2" - 5" (50mm -  
125mm)  
1" - 4" (25mm -  
100mm)

Also included  
(2) t-slot feet  
and mounting bolts  
*Part Number: PLFAE3525*

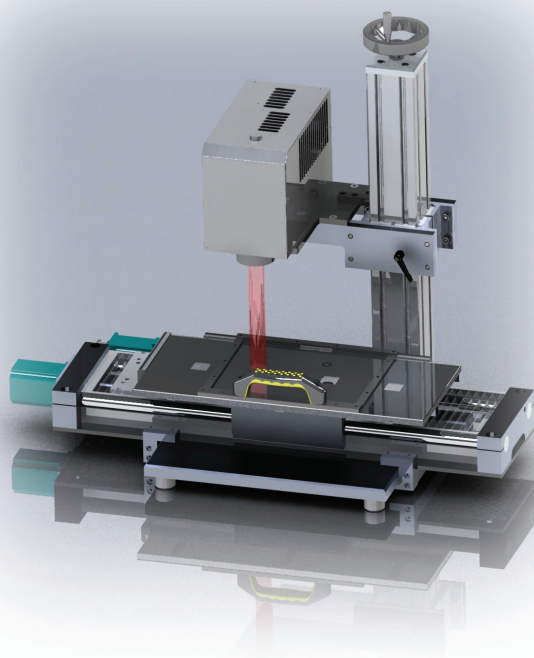


### Custom Fixtures

Custom designed and manufactured to meet application parameters.

- Integrated Cameras
- Multi-part designs
- Turn tables with integrated stations for marking and other operations
- Linear tables
- Part handling including conveyor systems and part orientation

Custom designs provided with 3D modeling for the design approval process.





# CMT

**COLUMBIA  
MARKING  
TOOLS**



**Wide Range of Products:**  
**Programmable Systems**  
**Dot-Peen & Scribe**  
**Laser**

**Air Impact Markers**

**Numbering Heads**

**Roll Marking Machines**

**Air & Hydraulic Presses**

**Hot Stamping Machines**

**Stamping Dies & Retainers**

**Standard Type**

**Hand Tools**

**Custom Marking Dies**

**Embossing Dies**



**27430 Luckino Dr**  
**Chesterfield MI 48047**

**586.949.8400**  
**586.949.8401 fax**  
**info@columbiamt.com**

**www.columbiamt.com**

