

Technical Brochure

CMT Eclipse[™] LET-Tag

Automated Tag Laser Marking Machine

LET-Tag Laser Marking

Automated Tag Laser Marking Machine

Offered as a complete laser marking machine, or outfitted with customer supplied laser.

The CMT Eclipse LET-Tag provides a high volume tag marking solution.

Standard Features:

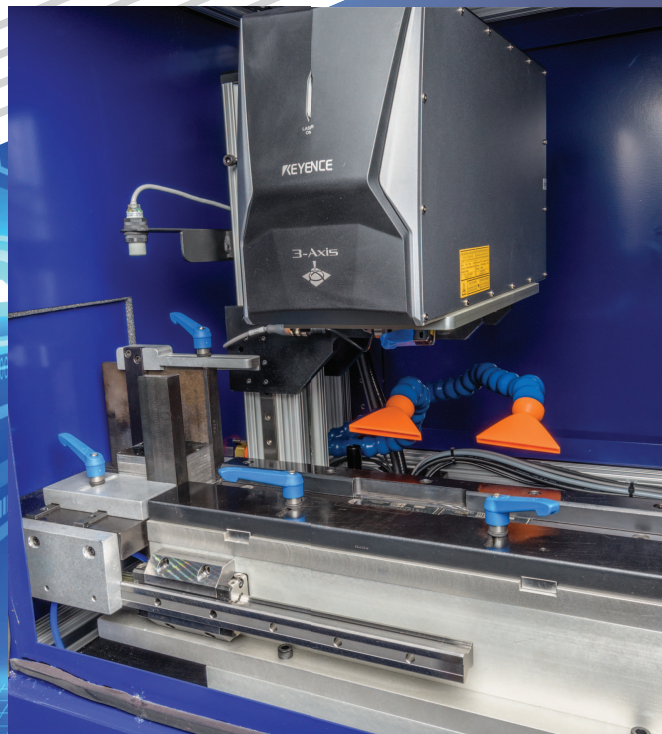
- Selection of laser marking source
- Steel enclosure
- Light-tight enclosure
- Tag feeding system with input and output bins
- Nema 12 machine mounted control panel (PLC optional)
- Heavy-duty machine base with tooling plate
- * Laser status light
- Variable height adjustment
- Fully complies with OSHA and has required CDRH certifications
- Auxiliary Fume Extractor Port
fume extractor port



Fume Extractor

Brushed stainless steel floor style cabinet with rolling casters. 3-stage filter system, pre-piped and wired to laser enclosure system as complete package. Includes hoses, nozzle mounting.

CMT Eclipse



Adjustable System

The laser head may be raised or lowered. The part feeding rails may be adjusted for different sized tags. The fume extraction nozzles can change position.



Turnkey Industrial CMT PC

The industrial fanless **PC**, 24 VDC, with Windows software comes with a 17" monitor and mount, membrane keyboard with integrated mouse and keyboard shelf. **Also includes** all cables and installation.

Making it a complete solution

Columbia Marking Tools has a large selection of accessories that can be combined with the CMT Eclipse Versatile LET-Tag laser marking solution to create the complete marking station

- * Additional infeed for multiple tag sizes
- * Custom HMI
- * Manual **station**
- * Mark verification
- * More functions

CMT

Columbia
Marking
Tools



Fixturing

The CMT LET-Tag fixture has three parts.

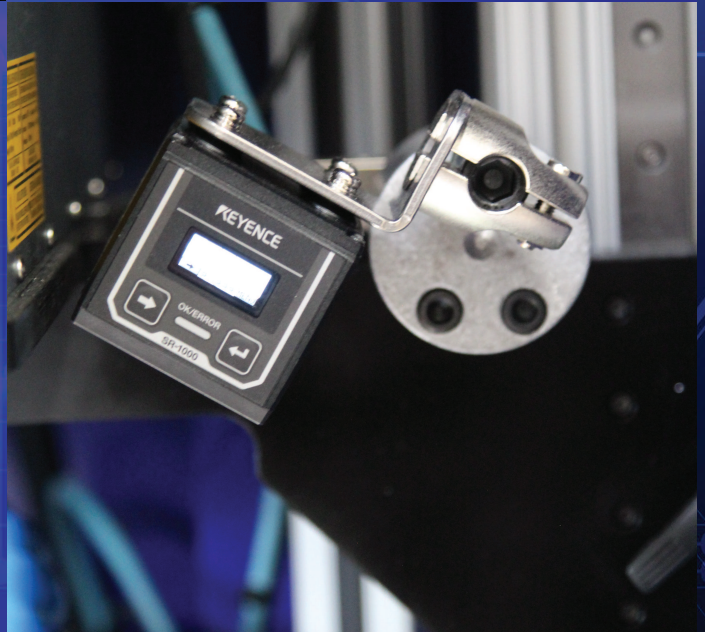
1. Infeed bin
2. Feeding rails
3. Exit chute

Infeed chutes can be **changed** out for different tag sizes. Also, custom fixturing may be added for manual operations.

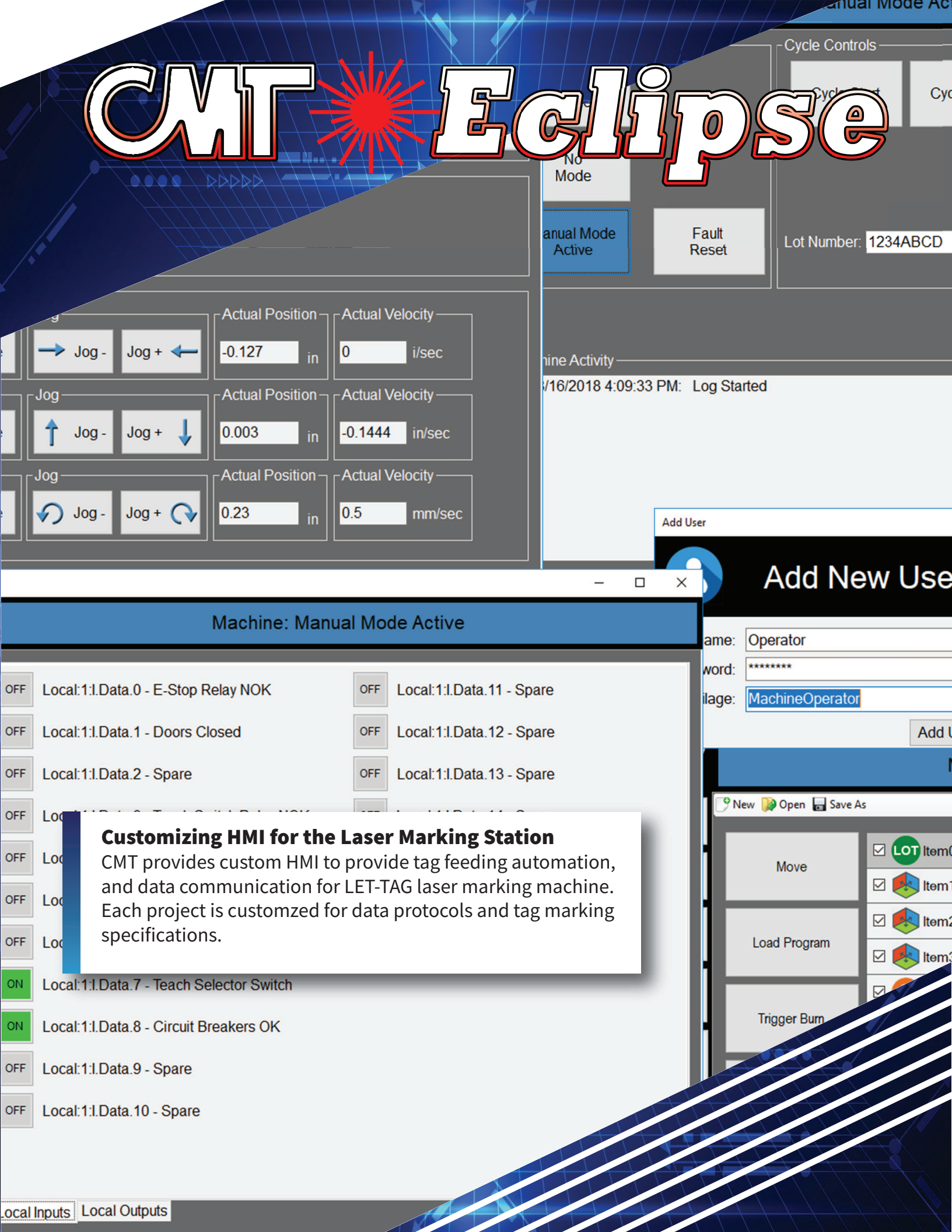
Additional Functions

The LET-Tag offers the chance to incorporate automated data functions with marking...

- Integrated camera for mark verification
- Serial number recording in MES database
- Counting



CMT Eclipse



Machine Activity

16/2018 4:09:33 PM: Log Started

Actual Position: -0.127 in

Actual Velocity: 0 i/sec

Actual Position: 0.003 in

Actual Velocity: -0.1444 in/sec

Actual Position: 0.23 in

Actual Velocity: 0.5 mm/sec

Cycle Controls

Manual Mode Active

Fault Reset

Lot Number: 1234ABCD

Add User

Machine: Manual Mode Active

OFF	Local:1:I.Data.0 - E-Stop Relay NOK	OFF	Local:1:I.Data.11 - Spare
OFF	Local:1:I.Data.1 - Doors Closed	OFF	Local:1:I.Data.12 - Spare
OFF	Local:1:I.Data.2 - Spare	OFF	Local:1:I.Data.13 - Spare
OFF	Local:1:I.Data.3 - Spare	OFF	Local:1:I.Data.14 - Spare
OFF	Local:1:I.Data.4 - Spare	OFF	Local:1:I.Data.15 - Spare
ON	Local:1:I.Data.7 - Teach Selector Switch		
ON	Local:1:I.Data.8 - Circuit Breakers OK		
OFF	Local:1:I.Data.9 - Spare		
OFF	Local:1:I.Data.10 - Spare		

Add New User

Name: Operator

Password: *****

Role: MachineOperator

Add User

New Open Save As

Move

Load Program

Trigger Burn

LOT Item0

Item1

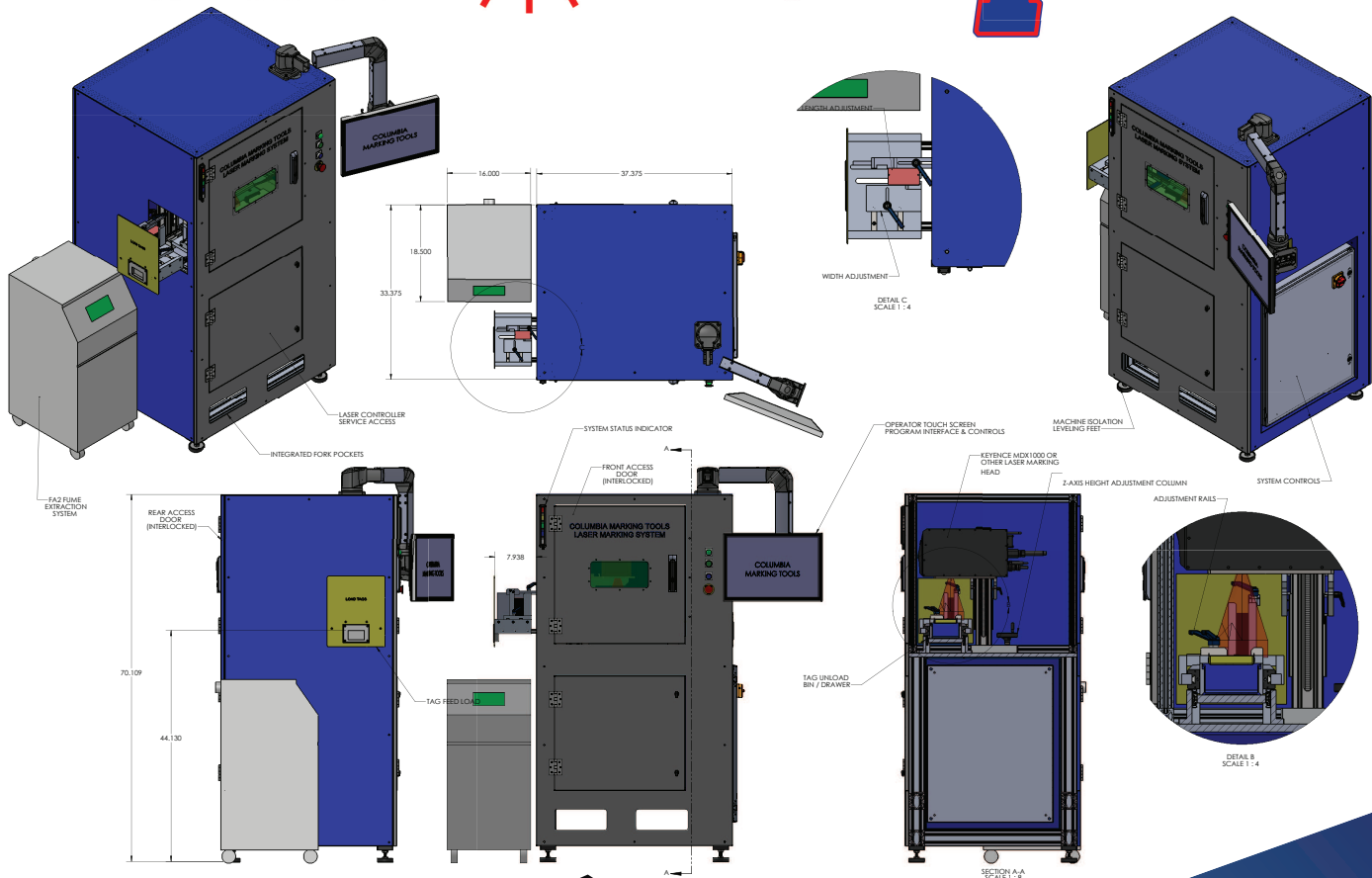
Item2

Item3

Customizing HMI for the Laser Marking Station

CMT provides custom HMI to provide tag feeding automation, and data communication for LET-TAG laser marking machine. Each project is customized for data protocols and tag marking specifications.

CMT Eclipse





LET-Tag Technical Summary

Enclosure specifications:

LET-Tag - Complete automated turn-key station for high-volume production marking of tags.

- Voltage 120 VAC, 60Hz, 1 phase, 15 amps
- Enclosure dimensions: 33" x 38" x 70" (D X W X H)
- Tags up to 6" x 8"
- Weight: 400#
- Class 1 certified to CDRH standards

Data Communication:

- MES integration - Ethernet IP, Ascii serial data,
- Operator input
- Barcode input
- Barcode selection

Laser selection:

- CMT provides a wide range of laser sources:
- Power: 1 watt to 50 watt
- Type: Co2, fiber, YVO4, YAG
- Options: additional infeed designs for different tag sizes, vision camera for 2D mark verification.



Fume Extractor



Essential Components:

LEPC - Industrial computer and mounting
LASERFA2 - Fume extractor
PLF10-TAG - Custom fixturing to include infeed and exit chute. Please provide parts prints with marking location noted for quotation.

CMT Eclipse



Webpage - Video - Quote Request

Made in USA by
Columbia Marking Tools

27430 Luckino Dr.
Chesterfield, MI 48047
USA

586.949.8400 - www.marking-machines.net