



Technical Brochure

CMT Eclipse[™] LER

Rotary Turn-Table Laser Marking Machine

LER Laser Marking Machine

Rotarty Turn-Table Marking Machine

Offered as a complete laser marking machine, or outfitted with customer supplied laser.

The CMT Eclipse LER takes the standard “Rotary” table design to another level. The Model R can be configured with many different stations. This allows the advancement of lean manufacturing by combining operations. The system can have 2 or more stations. The stations can be integrated with testing, cameras, or assembly tools. In addition, the design provides the flexibility to be used in either manual or fully automated operations.

Standard Features:

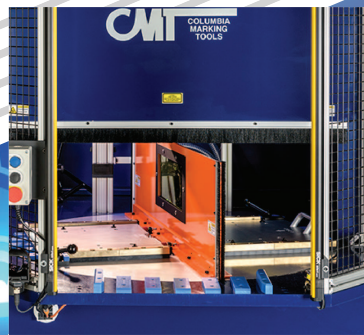
- Light tight enclosure with uses section dividers as part of the enclosure
- Large viewable safety glass
- Laser status light
- Variable height adjustment
- Laser Status Light
- Full Floor Style Machine Base
- Auxiliary Fume Extractor Port



Fume Extractor

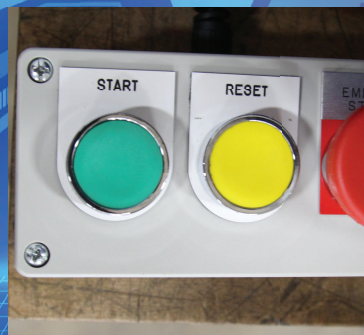
Brushed stainless steel floor style cabinet with rolling casters. 3-stage filter system, pre-piped and wired to laser enclosure system as complete package. Includes hoses, nozzle mounting.

CMT Eclipse



Revolving Door

Section divider doubles as a portion of the light tight enclosure. The rotary table can be divided into 2, 3, or 4 partitions. Each section can be setup with a different function.



Automated Door

LER comes standard with an automated door feature. The automation door can be controlled manually or via PLC. The door automatically turns upon completion of the marking operation.



Turnkey Industrial CMT PC

The industrial fanless PC, 24 VDC, with Windows software comes with a 17" monitor and mount, membrane keyboard with integrated mouse and keyboard shelf. Also, includes all cables and installation.

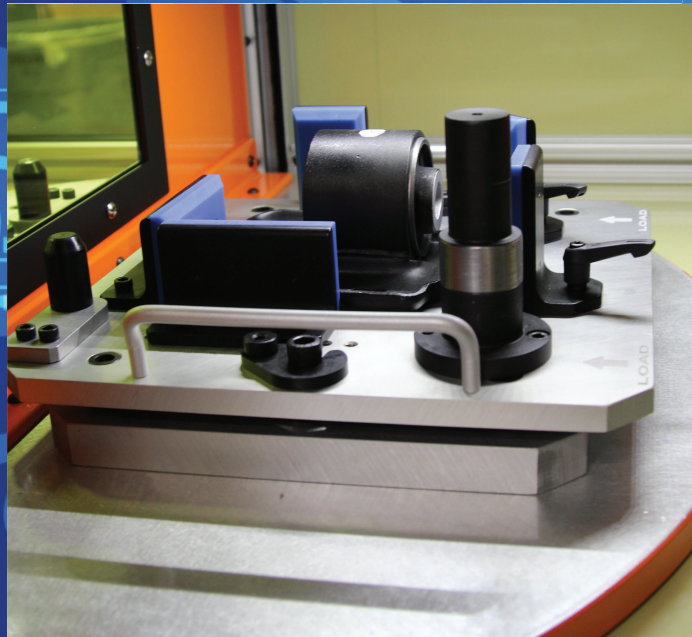
Making it a complete solution

Columbia Marking Tools has a large selection of accessories that can be combined with the CMT Eclipse Versatile LER laser marking solution to create the complete marking station

- * Part holding and fixturing
- * Custom HMI
- * Automated Z-axis
- * 2,3, or 4 stations
- * More functions

CMT

**Columbia
Marking
Tools**



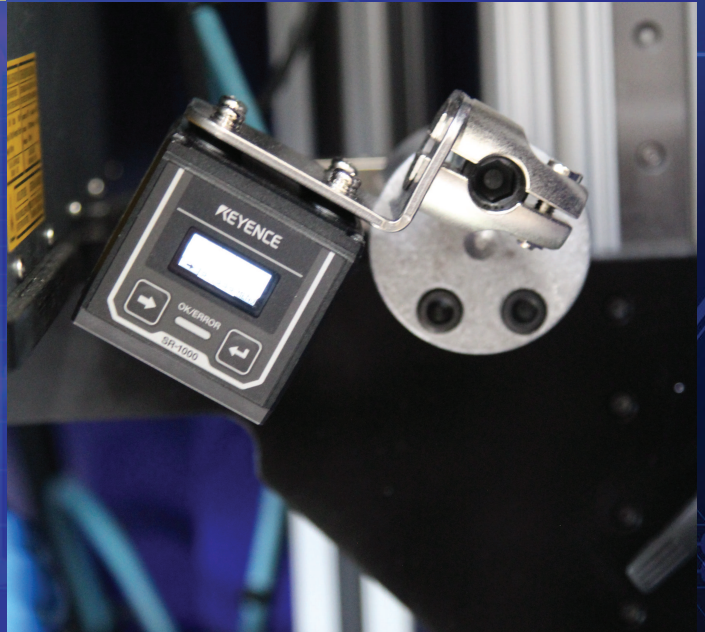
Fixturing

Custom fixtures are available with the LE24 laser marking system. They are designed with a master fixture plate and an adjustable design including a positive part stop for exact positioning every time. Depending on the design, these part holding assemblies may include easy clamping or positive stops to provide repeatable positioning. Part prints with marking location noted required for quotation.

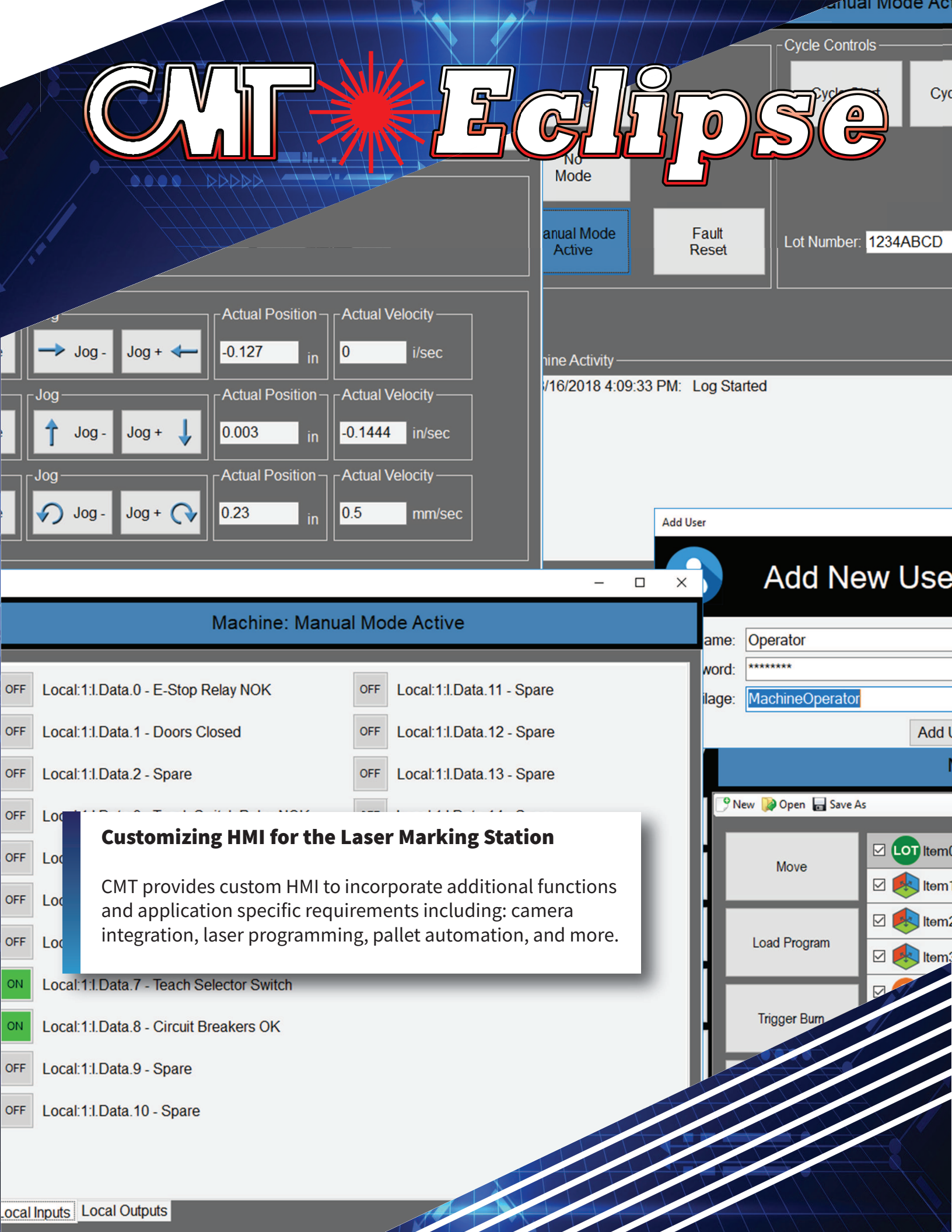
Additional Functions

The LER offers the chance to incorporate more than marking in the same station. With the choice of 2,3 or 4 stations additional functions can be included.

- Integrated camera for part or mark verification
- Integrated assembly tools
- Coating systems



CMT Eclipse



Customizing HMI for the Laser Marking Station

CMT provides custom HMI to incorporate additional functions and application specific requirements including: camera integration, laser programming, pallet automation, and more.





LER

Technical Summary

Enclosure specifications:

LER40 - The largest of our standard R models offers the most flexibility with table size of 40"

- Voltage 1430 AC
- Enclosure Dimensions: 72" x 50" x 76" (D X W X H)
- 2 sation work table: 15" x 15"
- Z axis 12" Est (Height varies by laser used)
- Weight: 6ll00#
- Class 1 certified to CDRH standards

LER30 - Moderate sized for medium parts, and a table size of 30"

LER20 - Mini for small parts, and a table size of 20"

Laser selection:

- CMT provides a wide range of laser sources:
- Power: 1 watt to 50 watt
- Type: Co2, fiber, YVO4, YAG
- Options: 3D profiling, integrated 3rd axis for marking the OD of round parts, vision camera for 2D mark verification.



Essential Components:

LEPC - Industrial computer and mounting

LASERFA2 - Fume extractor

PLF10 - Custom fixturing to include master fixture plate and quick release fixtures. Please provide parts prints with marking location noted for quotation.



Fume Extractor

www.marking-machines.net

CMT Eclipse



Webpage - Video - Quote Request

Made in USA by
Columbia Marking Tools

27430 Luckino Dr
Chesterfield, MI 48047
USA

586.949.8400 - www.marking-machines.net